

CURRENT CONNECTION

September 2020

www.calhounrec.coop

Calhoun County REC

Rockwell City, IA 50579 • (712) 297-7112 • (800) 821-4879

Your Touchstone Energy® Cooperative



The Everyday Value of Electricity

By Keaton Hildreth

Most people don't think much about the electricity they use. We expect the lights to turn on when we flip the switch and the coffeemaker to work each morning. The only time we really think about electricity is when the power goes out or maybe when the monthly bill arrives.

Given how electricity powers our lifestyle, it's a great value, especially when compared to other services and expenses. Think back to the cost of a gallon of gasoline or groceries 20 years ago. In comparison, the cost of electricity has remained largely flat.

Most of us have a cell phone, and we pay for television channels. Many of us consider these necessities. Maybe it's because we can see what we're getting for our money, and we pay the price for those services. In contrast, when we use electricity, we don't necessarily "see" all that we're getting for our money. 05C06AA

But considering what electricity does for us, it's a tremendous value for our quality of life as well as our

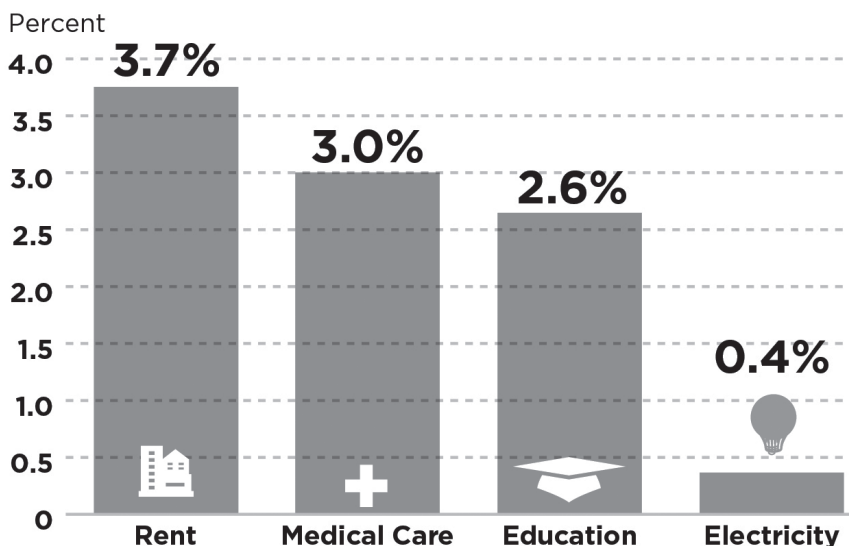


CEO Keaton
Hildreth

ELECTRICITY REMAINS A GOOD VALUE

The cost of powering your home rises slowly when compared to other common expenses. Looking at price increases over the last five years, it's easy to see electricity remains a good value!

Average Annual Price Increase 2014-2019



Sources: U.S. Bureau of Labor Statistics
Consumer Price Index

budgets. For comparison, consider that the cost of medical care increased 3 percent from 2014-2019 according to the Bureau of Labor Statistics Consumer Price Index (CPI). Education was not too far behind at 2.6 percent. So, where did electricity rank? According to the CPI, electricity increased by less than half a percentage point, 0.4 percent.

Your electric cooperative provides the reliable service you expect and deserve as a valued member of the co-op. And as your trusted energy advisor, we want to help you save energy and money.

The past few months have been challenging for many of our members and we're here to help. If you have questions about your account or are looking for ways to save energy, please give us a call. We are your electric co-op, and our sole purpose is to serve you and the needs of our community. That's everyday value.

HARVEST SAFETY TIPS FOR FARMWORKERS

- **Maintain a 10-foot clearance** around all utility equipment in all directions.
- **Use a spotter and deployed flags** to maintain safe distances from power lines and other equipment when doing field work.
- **If your equipment makes contact with an energized or downed power line, contact us immediately** by phone and remain inside the vehicle until the power line is de-energized. In case of smoke or fire, exit the cab by making a solid jump out of the cab, without touching it at the same time, and hop away to safety.
- **Consider equipment and cargo extensions of your vehicle.** Lumber, hay, tree limbs, irrigation pipe and even bulk materials can conduct electricity, so keep them out of contact with electrical equipment.

Source: Safe Electricity



AMERICA'S ELECTRIC
COOPERATIVES

RECIPE OF THE MONTH

SANTA FE BEEF AND CORN CHILI

INGREDIENTS - CHILI:

- | | |
|----------------------------------|--------------------------------|
| 1 pound Ground Beef | 1 can (15 ounces) tomato sauce |
| 1 teaspoon minced garlic | 1 can (14-1/2 ounces) diced |
| 1 can (15-1/2 ounces) red kidney | tomatoes with mild green |
| beans, drained | chilies, undrained |
| 1 can (15-1/4 ounces) sweet | 1 package (1-1/4 ounces) chili |
| corn, drained | seasoning mix |

INGREDIENTS - SAUCE:

- | | |
|----------------------------|---------------------------|
| 1 3/4 cup dairy sour cream | 1-1/2 teaspoons green hot |
| | pepper sauce |

DIRECTIONS:

Heat large nonstick skillet over medium heat until hot. Add Ground Beef and garlic; cook 8 to 10 minutes, breaking into small crumbles and stirring occasionally. Pour off drippings, if necessary.

Stir in beans, corn, tomato sauce, tomatoes and chili seasoning; bring to a boil. Reduce heat; simmer, uncovered, 20 minutes, stirring occasionally.

Meanwhile combine sour cream and pepper sauce in small bowl. Serve with chili.



Cooperation Among Cooperatives

On Monday, August 10th Calhoun County REC Linemen Doug LeMonds and Jared Kuhlbers traveled to the Boone area to help Midland Power Cooperative repair damage from the “Derecho” storm. Our 6th cooperative principle is “Cooperation Among Cooperatives” which states cooperatives serve their members most effectively and strengthen the cooperative movement by working together through local, national, regional and international structures.

These two linemen worked 16+ hour days from the Monday the storm hit, until late Saturday evening. “Thank you” to all the linemen who worked to restore electricity quickly and safely!



Doug LeMonds



Jared Kuhlbers

Pole Treatment Program Continues

Calhoun County REC will soon start its 36th year of pole testing treatment and replacement program. This fall Star Energy Services will be testing around 1,000 poles for the Cooperative. Don’t be alarmed if someone starts digging around REC poles. By changing out the rotted poles and extending the life of the treated poles we will be able to provide you with even more dependable electric service in the future. Star Energy Services will be testing poles in the following Townships: Cedar, Greenfield, Reading, Roland, and Union. To date, 34,115 poles have been inspected and 1,258 have been replaced. 12C26HA

Look for this logo on their trucks.



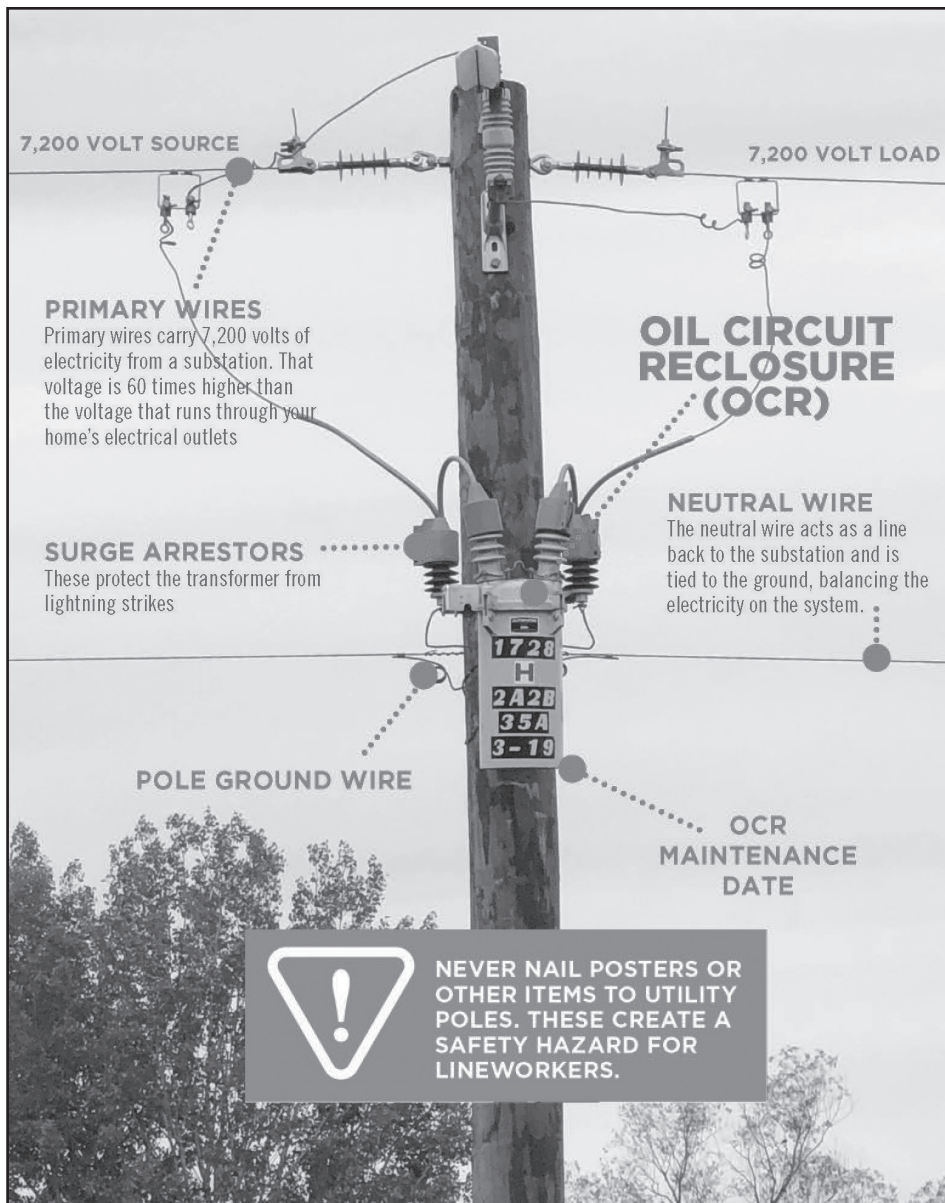
SPOT YOUR NUMBER

Sue and Tim Smith spotted their number and will receive a **\$10** electric bill credit.

Melanie Ludwig and John Wahl missed their opportunity to receive a **\$10** electric bill credit.

Don’t forget to read the newsletter and check for your location number. If your location number is spotted, call the Calhoun County REC by the 15th of the month to receive a **\$10** credit on your electric bill.

** Your location number is listed on your billing statement. **



Oil Circuit Recloser Maintenance

Oil circuit reclosers (OCRs) function like a circuit breaker, protecting the Cooperative's distribution lines when a temporary fault or short occurs on the line. The OCRs are somewhat similar to the breaker in your home's electrical panel. The OCR opens to stop the fault, and then quickly closes back in, resulting in a "blink" in power. If the disturbance on the line persists, the OCR will continue to operate or "trip" two more times and then remain open, resulting in a power outage. Blinking lights are a result of momentary outages caused when some type of disturbance exists on the line. Examples are lightning strikes, animals and tree branches coming into contact with energized power lines. 09C24AA

Like any mechanical devices, the OCR requires periodic cleaning and inspection for damages or defective parts. This year, our line crew along with EIR Testing, serviced 58 OCR's in the Sherwood Substation area which includes Coon Valley, Elm Grove, Garfield, Jackson, Lake Creek, Twin Lakes and Calhoun townships.

Touchstone Energy Community Volunteer Challenge Winner



Richard Hall

Richard Hall, Member Services Representative, demonstrates the Touchstone Energy value of commitment to community by volunteering for the City of Manson's city-wide clean up days in July. Hall was the winner of one of the 2020 monthly Touchstone Energy Community Volunteer Challenge \$100 drawings and he donated the funds to the Manson Fire Department, which he has also served on since 2013. Way to go, Richard!

Calhoun County REC

A Touchstone Energy® Cooperative

-- Directors --

Jim Miller, President	Fonda
LaVerne Arndt, V. President	Sac City
Jason McKenney, Secretary	Somers
Ron Hanson, Treasurer	Pomeroy
Duane Beschoner	Lohrville
Steve Boedecker	Rockwell City
Scott Hicks	Lake City

Keaton Hildreth, CEO

Office Hours: Monday - Friday
8:00 a.m. to 4:30 p.m.
Telephone: 712-297-7112 or
Toll Free: 800-821-4879
Fax: 712-297-7211
e-mail: info@calhounrec.coop
www.calhounrec.coop
After 4:30 p.m. call 800-821-4879
or 712-297-7112
for outages and emergencies only.

This institution is an equal
opportunity provider and employer.