

CURRENT CONNECTION

June 2020

www.calhounrec.coop

Calhoun County REC

Rockwell City, IA 50579 • (712) 297-7112 • (800) 821-4879

Your Touchstone Energy® Cooperative



Calhoun County closes on first industrial park

After years of in-depth research and careful planning, Calhoun County finally has an industrial park.

Calhoun County Rural Electric Cooperative partnered with the Calhoun County Board of Supervisors, Calhoun County Economic Development Corporation and Corn Belt Power Cooperative to get the project located at the intersection of Highway 20 and Highway 4 off the ground.

“It has been a long time coming,” said Keaton Hildreth, Calhoun County REC’s chief executive officer said. “As an organization we’ve been working for years to get this done.”

Phase One amounts to 21.72 acres near Sparky’s One Stop at the intersection of Highway 20 and Highway 4. With help from the partnership, infrastructure buildout is set to begin in the near future.

“This would not have happened without all of our partners, especially the Calhoun County Board of Supervisors,” Hildreth said.

Why an industrial park? In short, it will help build Calhoun County’s rural economy. However, it’s more than that says Hildreth.

“As an electric cooperative, one of our main goals is to enhance the quality of life in the area we serve,” he said. “Enhancing quality of life means more than just providing safe, reliable and affordable electricity. It also means attracting and retaining good-paying jobs to our area.”

Studies show that the area is primed to attract warehousing and distribution businesses. Those businesses will support travelers and logistic support in the region.

“Having an industrial park will foster a stronger economic base, which will in turn increase the county’s wage base and tax base,” Hildreth said. “We can’t thank our partners enough. It was a team effort to bring this project to the finish line. Our goal is to create jobs and wealth. We want to build stronger regional partnerships and be proactive in enhancing the quality of life to those we serve.”

Hildreth says the investment in an industrial park will help stabilize rates for electric cooperative member-owners in the future.

“Increasing business activity at the intersection of Highway 20 and 4, will increase energy sales,” he said. “By increasing energy sales, Calhoun County REC will be able to spread fixed cost over more kilowatt hour sales.”

There is an option to purchase 96.08 acres in the future, provided Phase One is successful. In total, the project could be as large as 117 acres. For more information, please read future month’s versions of Calhoun County Rural Electric Cooperative’s newsletter.



Congratulations Graduates!

Congratulations to the winners of our Calhoun County REC \$500 scholarships!

Megan Decker, daughter of Tom and Diane Decker and a senior at South Central Calhoun. She plans on attending Iowa State University in Ames.



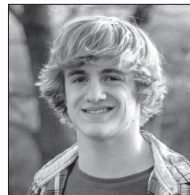
Megan Decker

Zane Neubaum, son of Jeff and Peggy Neubaum and a senior at South Central Calhoun. He plans on attending Buena Vista University in Storm Lake.



Zane Neubaum

Kyler Sander, son of Dan and Lori Sander and a senior at South Central Calhoun. He plans on attending Dordt University in Sioux Center. 03C11FA

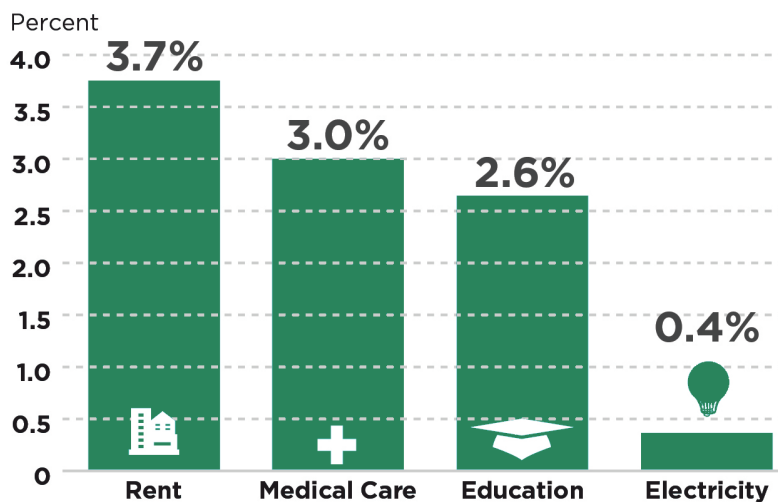


Kyler Sander

ELECTRICITY REMAINS A GOOD VALUE

The cost of powering your home rises slowly when compared to other common expenses. Looking at price increases over the last five years, it's easy to see electricity remains a good value!

Average Annual Price Increase 2014-2019



Sources: U.S. Bureau of Labor Statistics
Consumer Price Index

The Calhoun County REC office will be closed
Friday, July 3rd
to observe Independence Day.

For outage and emergencies
call 712-297-7112 or 800-821-4879

To appoint nominating committee

Excerpts from bylaws

The following is the process involved in the nomination of Calhoun County REC members for election to the Board of Directors. Three directors will be elected at the 84th Annual Meeting which will be held on September 2, 2020. Section 3. It shall be the duty of the Board to appoint, not less than 40 nor more than 90 days before the date of a meeting of the members at which directors are to be elected, a committee on nominations, consisting of three members from each district from which a director is elected. No members of the Board may serve on such committee. The committee shall prepare and post at the principal office of the Cooperative at least 30 days before the meeting, a list of those candidates nominated from each district from which a director is to be elected. **The committee is encouraged, but not required, to nominate at least two candidates for each director to be elected.**

Any fifteen (15) or more members from a district from which a Director is to be elected, acting together, may make other nominations for Director from their district by petition not less than 20 days prior to the meeting and the Secretary shall post such nominations at the same place where the list of nominations made by the committee is posted.

If you are interested in serving on the nominating committee in your district, please call Keaton Hildreth, CEO, at 712-297-7112.

Remember....

**Your REC
Annual Meeting!**
September 2, 2020
Calhoun County
Expo Building in
Rockwell City

Happy Father's Day!!



Keaton Hildreth



Bret McAlister



Jared Kuhlers



Taylor Jondle



Ben Wiederin



Chad Krukow



Doug LeMonds

Not pictured is Accountant/Office Manager Rob Peterson

Line Crew Updates

With the retirement of Mike Terwilliger on May 18, Bret McAlister, former Line Foreman, is now Line Superintendent.

Reid Galloway, former Lead Lineman, is now Line Foreman.

Doug LeMonds, former Lineman, is now Lead Lineman. 15CO1DA

We also welcomed, Taylor Jondle, 1,000 Hour Lineman to Calhoun County REC in early May.



Bret McAlister



Reid Galloway



Doug Lemonds



Taylor Jondle

RECIPE OF THE MONTH

FIESTA RANCH DIP

INGREDIENTS:

- 16 oz of sour cream
- 10 oz can of Rotel
- 15 oz can of Mexicorn
- 1 pkg dry ranch dressing mix
- 1 cup cheddar cheese

DIRECTIONS:

In a large bowl, mix the above ingredients. Serve immediately or dip can be made in advance and stored in refrigerator for up to 2 days.



**Please check
our website and
Facebook page for
COVID-19 related
announcements!**

SPOT YOUR NUMBER

Eugene Morris spotted his number and will receive a **\$10** electric bill credit. Ryan and Megan Hicks and Briar and Kelsey Holtorf missed their opportunity to receive a **\$10** electric bill credit.

Don't forget to read the newsletter and check for your location number. If your location number is spotted, call the Calhoun County REC by the 15th of the month to receive a **\$10** credit on your electric bill.

** Your location number is listed on your billing statement. **

Duane Arnold Energy Center to cease operations later this year

In 1969, Corn Belt Power Cooperative, Central Iowa Power Cooperative and Iowa Electric Light and Power Company, broke ground on the construction of a 550 MW capacity nuclear power plant - the Duane Arnold Energy Center (DAEC) near Palo, Iowa. At the time and ever since, Corn Belt Power has been a 10-percent stakeholder in the plant. Today, Iowa's electric providers prepare for the imminent closure of the facility.

The construction on the nuclear power plant spanned several years, with commercial operation commencing in February 1975. It was the state of Iowa's largest single construction project at the time.

The plant's consistent and reliable operating strategy, along with \$1 billion in additional investments over the years, led to a series of upgrades increasing DAEC's capacity from 550 MW to 614, MW, today's generating capacity. The plant's successful operation was never on greater display than in 2008 when it survived the 500-year historic flood. Through thoughtful planning, the plant sits at 20 feet above the Cedar River, providing the protection needed from the flood. In 2008, with the river cresting at record levels, DAEC's operation continued without faltering.

"The plant was an important generator for Corn Belt Power in the 80's, 90's and early 2000's," said Ken Kuyper, executive vice president and general manager, Corn Belt Power Cooperative. "For years it has been one of the best run nuclear facilities in the country. It has provided affordable and reliable power to Iowans for decades."

Before Corn Belt Power joined Basin Electric Power Cooperative as a Class A member, Duane Arnold made up a large portion of energy supplied to members. Since joining Basin Electric, Corn Belt Power's generation mix has diversified. Today, the co-op's 10-percent stake or about 62 MW makes up only 1.6-percent of power supplied to members.

With increasing regulations on nuclear plants putting pressure on the cost of operations, and enhanced competition from lower cost natural gas-fired generation, in early 2018, NextEra Energy – the company that purchased Iowa Electric Light and Power's (Alliant) 70% share of DAEC in 2005 - announced a likely end to production at DAEC in 2025 when Alliant Energy's purchase power agreement (PPA) ended, despite having a license to operate through 2034.

Ultimately, NextEra Energy released Alliant Energy from the PPA early. NextEra Energy, as the majority owner, made another announcement in July 2018 that the plant would cease operations in October 2020. 06CO2DA

"Having joined Basin Electric, we are well positioned to absorb the closure of DAEC," Kuyper said. "It's important to remember that we now rely on a vast amount of generators to supply power to Corn Belt Power members. Gone are the days of just having three or four resources. Today we have an all-of-the-above strategy, which makes our power supply more reliable and flexible in the future."

Duane Arnold will cease operations later this year. It will take years before the area where the plant is located will return to green fields. Until that time, plant employees will still be monitoring and guarding the facility.

1995:

54.8% Coal
32% Nuclear
11.9% WAPA
1.3% Wisdom

2005:

39.08% Coal
27.01% Nuclear
9.86% Purchases
8.24% Wisdom Unit 1
7.92% WAPA
6.20% Basin Electric
1.63% Hancock Wind
0.06% Wisdom Unit 2

2019:

50.5% Coal
18.7% Purchase
15.6% Renewable
7.1% Natural Gas
6.4% Hydro
1.6% Nuclear



Calhoun County REC

A Touchstone Energy® Cooperative 



-- Directors --

Jim Miller, President	Fonda
LaVerne Arndt, V. President	Sac City
Jason McKenney, Secretary	Somers
Ron Hanson, Treasurer	Pomeroy
Duane Beschorner	Lohrville
Steve Boedecker	Rockwell City
Scott Hicks	Lake City

Keaton Hildreth, CEO

Office Hours: Monday - Friday

8:00 a.m. to 4:30 p.m.

Telephone: 712-297-7112 or

Toll Free: 800-821-4879

Fax: 712-297-7211

e-mail: info@calhounrec.coop

www.calhounrec.coop

After 4:30 p.m. call 800-821-4879

or 712-297-7112

for outages and emergencies only.

This institution is an equal opportunity provider and employer.