

CURRENT CONNECTION

January 2020

www.calhounrec.coop

Calhoun County REC

Rockwell City, IA 50579 • (712) 297-7112 • (800) 821-4879

Your Touchstone Energy® Cooperative



Peterson Transportation Inc. Honored with Iowa Venture Award

The Iowa Area Development Group (IADG), on behalf of Iowa's rural electric cooperatives, municipal utilities, and independent telecommunication companies, honored eight distinguished Iowa companies with the Iowa Venture Award at a luncheon held in conjunction with the Iowa Association of Electric Cooperatives' annual meeting.

Peterson Transportation Inc. of rural Manson is a long-distance hauler focusing on flat-bed delivery of steel and wood. This 20-year-old company has grown to a fleet of 45 semi-trucks and 125 trailers. Peterson Transportation employs over 70 people, including 55 drivers. The company recently invested over \$3.5 million to grow the fleet and expand and renovate its headquarters and facilities. Calhoun County Rural Electric Cooperative nominated Peterson Transportation Inc. for the Iowa Venture Award.

"The Iowa Venture Awards Luncheon provides a forum to celebrate Iowa companies that are making a positive impact in the communities, State of Iowa, and industries they serve," said IADG President Rand Fisher. "Thank you to Peterson Transportation for providing Iowa companies with safe and on-time delivery services at competitive rates."

The 2019 Iowa Venture Award recipients are: AVEKA Manufacturing Inc. – Cresco, Fredericksburg, Waukon, GrandStay Hotel & Suites – Rock Valley, Iowa Select Farms - "Outstanding Business of the Year" – Locations in 52 Iowa counties, M & C Anderson Pullets – Sioux Rapids, Mid-Iowa Cooperative – Conrad and 13 additional statewide locations, Peterson Transportation Inc. – Manson, Preferred Wholesale, Inc. – Albia and Stensland Family Farms and Creamery – Larchwood.

This marks the 32nd year that IADG has presented Iowa Venture Awards to individuals and organizations, both large and small, in recognition of their significant contributions to Iowa's economy through entrepreneurial leadership, innovation, and the creation of job opportunities. History has demonstrated that these are among the most accomplished and successful companies in the state. Together they are helping to sustain and grow Iowa's economy.



Pictured left to right: Mike Naig, IA Secretary of Agriculture; Jim Vermeer, Vice President Business Development, Corn Belt Power; Keaton Hildreth, CEO, Calhoun County Electric Cooperative; Kayla Wiederin, Communications Manager, Calhoun County Electric Cooperative; Alex Potzner, Peterson Transportation, Inc.; Aaron Peterson, Peterson Transportation, Inc.; Julie Samuelson, Peterson Transportation, Inc.; Chad Hartzler, Peterson Transportation, Inc.; Brittany Dickey, Development Finance Director, Corn Belt Power; and Rand Fisher, President, IADG.

Calhoun County REC offers Basin Scholarships

Dependents of members of Calhoun County REC are eligible to **apply for a \$1,000 scholarship** to be provided by Basin Electric Power Cooperative and Corn Belt Power Cooperative, power suppliers of Calhoun County REC.

The scholarship program is designed to encourage and recognize the achievements of a student living on electric cooperative lines. The scholarship must be used for educational costs and the student must enter college in the fall of the school year for which the scholarship is given. The applicant must be a student who is enrolled or planning to enroll in a full-time graduate or undergraduate course of study at an accredited, two year or four-year college, university or vocational/technical school. This scholarship is awarded without regard to other awards, loans or financial assistance the

applicant may have obtained. Award of the scholarship is based on the following criteria: SAT/ACT scores, grade-point average, work experience, participation in school and community activities, a statement by the student explaining his/her educational and career goals and a written recommendation by a third party. Applicants for the scholarship will first be screened by their cooperative. Each member cooperative may forward one finalist to Corn Belt Power Cooperative to be considered for the scholarship. 15C16DA

Deadline is on or before February 14th at the Calhoun County REC office. To obtain an application contact our office at 712-297-7112 or 800-821-4879 or go to www.calhounrec.coop to find the application.

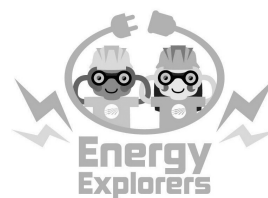


Energy efficiency technologies and information for contractors and building trades professionals are the focus of the 2020 Momentum is Building (MIB) conference, scheduled for Feb. 6 and 7 in Des Moines, Iowa. The conference provides attendees with continuing education credits, networking opportunities, presentations by recognized industry energy efficiency and building trades experts, along with exhibits on state-of-the-art technologies. 02C35IA

Sponsored and organized annually by the Touchstone Energy Cooperatives® of Iowa, MIB offers an opportunity for members of Iowa's construction industry to learn more about the local service benefits available from locally-owned electric cooperatives, serving nearly 650,000 Iowans in all 99 counties.

MIB 2020 will be held at the Sheraton West Des Moines beginning at 8:00 AM on Thursday, Feb. 6 running through 12:00 PM on Friday, Feb. 7. Registration for the event is available online at momentumisbuilding.com or by contacting Richard Hall, Member Services Representative.

ELECTRICAL EQUIPMENT WORD SCRAMBLE

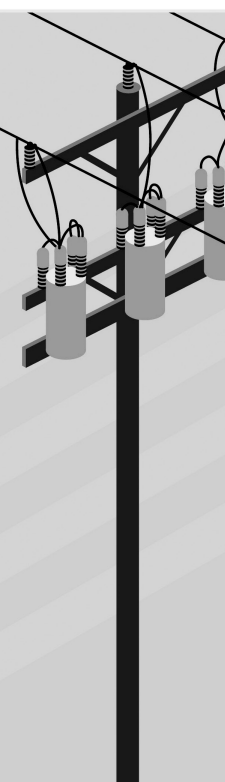


Electric co-ops use a variety of equipment to make sure you and your family receive reliable electricity. Can you unscramble the equipment terms below?

Use the provided clues for help, and double check your work in the answer key below.

- ORNSTAMREFR**
These can look like large metal cans on top of utility poles or big green boxes on the ground. They are used to reduce the voltage of electricity, making it safe for use in your home.
- OERPW NSLIE**
These can hang overhead or be placed underground. They carry electricity from where it's generated to homes and businesses in your community.
- OUTASBSNTI**
This is an electrical facility that contains equipment for controlling the flow of electricity.
- RCTLECIE ERMTE**
These devices are typically found outside the home and measure the amount of electricity you use.
- CBUTKE KTURC**
Lineworkers use these types of vehicles to reach power lines and poles when making repairs and updates to the electrical system.

Answer Key: 1. TRANSFORMER 2. POWER LINES 3. SUBSTATION 4. ELECTRIC METER 5. BUCKET TRUCK



RECIPE OF THE MONTH

CREAMY CHICKEN CASSEROLE

INGREDIENTS:

3 boneless, skinless chicken breasts, cooked and shredded	1 cup milk
1 teaspoon garlic powder	2 cups of shredded Cheddar cheese
1 tablespoon olive oil	1/2 teaspoon ground black pepper
1 can cream of chicken soup	1-pound cooked elbow macaroni
1 can cream of mushroom soup	1 1/2 cups panko bread crumbs or regular bread crumbs

DIRECTIONS:

Preheat oven to 350 degrees. Cook chicken with garlic powder. Drizzle with olive oil. When done, shred chicken with a fork, and save the juice. Combine the two cream soups, milk, cheese, cooked chicken, broth from chicken and pepper. (If desired, add some sour cream or cream cheese into the mixture for extra flavor and creaminess.) Add cooked macaroni. Stir the mixture and pour into a 9-inch by 13-inch casserole pan. Top casserole with breadcrumbs. Bake at 350 degrees for 20 to 25 minutes. Brown panko topping under broiler on low for 3 to 5 minutes.

Line crews begin annual line patrol

Line patrol involves line crews driving line in selected townships and taking note of how lines, poles and equipment are holding up. Trouble areas then get marked down as potential candidates for repair during construction season. So if you see electric cooperative vehicles come into your yard, they are likely checking equipment up to the meter and transformer. Likewise, if you see line trucks driving slowly on the road, take care when you pass, your linemen are out ensuring that you have the most reliable service possible by making sure the lines, transformers and equipment on your distribution system are in working order.

Line patrol is another duty performed by your electric co-op to show how they work to serve you winter, spring, summer, fall plus every day and night in between.



Your Cooperative is Looking for the Next Generation of Leaders

Deadline to apply is March 2, 2020

Youth Tour was established with one thought in mind—to inspire our next generation of leaders. More than 50,000 young Americans have taken advantage of this opportunity offered by their electric cooperative. High school students who have finished their sophomore or junior year are invited to apply.

Applications will be available in the office or on our website at www.calhounrec.coop. For more information contact us at 712-297-7112.

SPOT YOUR NUMBER

Dan Nelson spotted his number and will receive a **\$10** electric bill credit. John Beamer and Aaron Daniel missed their opportunity to receive a **\$10** electric bill credit.

Don't forget to read the newsletter and check for your location number. If your location number is spotted, call the Calhoun County REC by the 15th of the month to receive a **\$10** credit on your electric bill.

** Your location number is listed on your billing statement. **

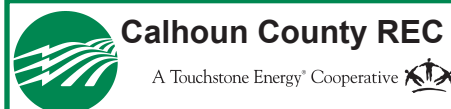
State Legislators Listen to Coop Issues

Directors and employees from Calhoun County REC, Midland Power Cooperative, Prairie Energy Cooperative and Corn Belt Power Cooperative met with legislators in Fort Dodge December 17 at the Best Western Starlite Village. Senator Tim Kraayenbrink, Representative Mike Sexton, Senator Dennis Guth and Representative Anne Meyer attended. 23S10HA

The legislators were informed of various cooperative issues to consider in the upcoming session such as safety/reliability, electric vehicle charging stations, fairness down the lines, energy efficiency and community involvement.



CEO Hildreth along with Directors Hanson and Miller speak with Representative Sexton and Senator Kraayenbrink.



-- Directors --

Jim Miller, President	Fonda
LaVerne Arndt, V. President	Sac City
Jason McKenney, Secretary	Somers
Ron Hanson, Treasurer	Pomeroy
Duane Beschoner	Lohrville
Steve Boedecker	Rockwell City
Scott Hicks	Lake City

Keaton Hildreth, CEO

Office Hours: Monday - Friday

8:00 a.m. to 4:30 p.m.

Telephone: 712-297-7112 or

Toll Free: 800-821-4879

Fax: 712-297-7211

e-mail: info@calhounrec.coop


www.calhounrec.coop

After 4:30 p.m. call 800-821-4879

or 712-297-7112

for outages and emergencies only.

This institution is an equal opportunity provider and employer.



Pay your Calhoun County REC bill online!

You can pay by credit/debit card, check or savings.
Also view your bill and amount due online.

Go Online to: www.calhounrec.coop

What is in the Facility Charge?

Have you ever looked at your monthly statement and wondered what is included in the facility charge?

The facility charge covers the Cooperative's investments in fixed costs – costs incurred to build and maintain the system that makes electricity available to your home or businesses 24/7

These costs are part of the bill you pay to make sure that electricity is available to you whenever you want it.



the Monthly Facility Charge includes these services



Fixed costs include:

- transformers
- wire
- fleet
- poles
- equipment
- headquarters
- member service functions
- right-of-way clearing
- general & administrative costs

