



**Calhoun County Electric  
Cooperative Association**

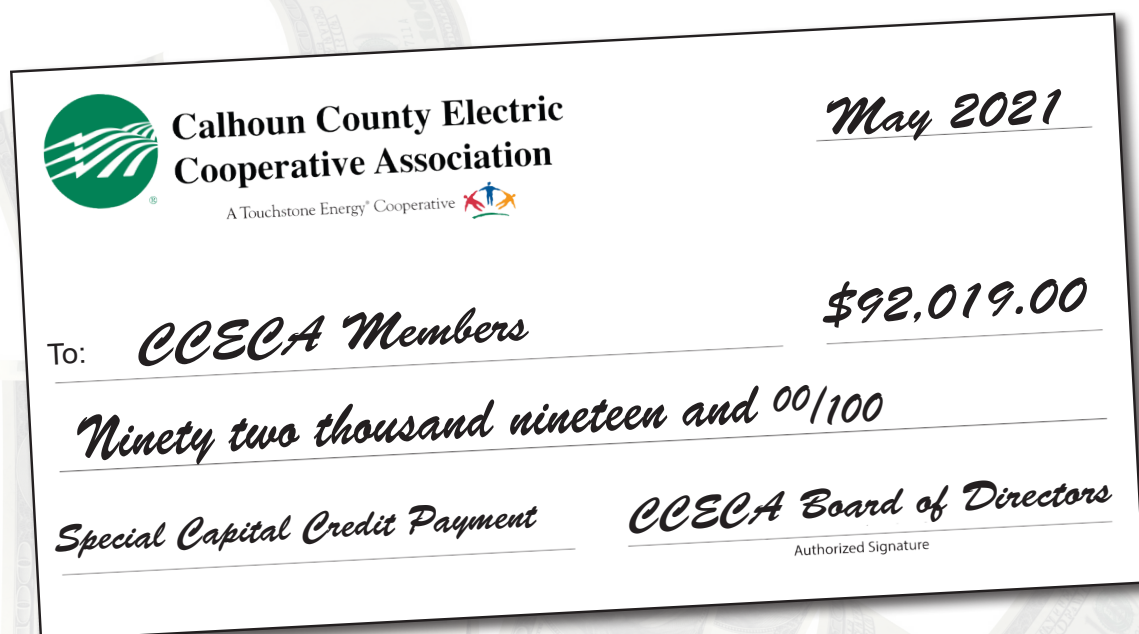
A Touchstone Energy® Cooperative



Monthly publication for member-owners

# CCECA NEWS

Visit us online at [www.calhounrec.coop](http://www.calhounrec.coop)



## Special Capital Credit Payment

Being a member of a not-for-profit electric cooperative has many benefits. This month, we are excited to exercise one of those benefits through a special capital credit payment. If you were a member of Calhoun County Electric Cooperative in 2020, you will be receiving a bill credit for your portion of this special cash disbursement, based on your 2020 electric usage, also known as patronage. The total amount of cash returned to our members will be \$92,019! Calhoun County Electric Cooperative is a member of Corn Belt Power Cooperative, based in Humboldt, Iowa. Corn Belt provides Calhoun County Electric Cooperative with all our wholesale power needs. In March of 2021, Corn Belt retired a portion of their 2020 margins back to its membership, in the form of cash. Because of the financial health of your local cooperative, your Board of Directors approved crediting the cash received, back to you as members. Essentially, we are passing the profits on to you, the member-consumer.

### Special Capital Credit Payment

Front

Look for your bill  
credit

### Shine the Light

Page 2

Nominate a local  
volunteer in June

### Memorial Day

Page 2

Office Closed- May 31

### Two Positions Open for Election

Page 2

Districts 2 & 7

### Ladder Safety

Page 3

Take precautions  
before you climb

### Mark Your Calendar

Page 4

2021 Annual Meeting  
Member Challenge

## Shine the Light on Community Volunteers in June

Guided by our cooperative commitment to community, Iowa's electric co-ops are launching a new contest in June to celebrate local volunteers. The Shine the Light contest, sponsored by the Touchstone Energy Cooperatives of Iowa, will accept nominations and select three winners who will each receive a \$1,500 donation to their local charity or nonprofit.

Member-consumers and employees of Iowa's electric cooperatives are eligible to nominate local volunteers during the month of June. If you receive electricity from Calhoun County Electric Cooperative, you're a co-op member-consumer and we encourage you to nominate someone who is making a positive impact in the community. The volunteer being nominated does not need to be a co-op member-consumer. Minors may be nominated with consent from their parents or legal guardians.

The three winners will be announced during the Iowa State Fair in August. In addition to the \$1,500 donation, each winner will be featured in the September issue of Living with Energy in Iowa magazine.

Go to [www.IowaShineTheLight.com](http://www.IowaShineTheLight.com) to review the contest rules. Contest entries will be accepted at this website starting on June 1. Help us shine the light on community volunteers this summer and consider making a nomination.



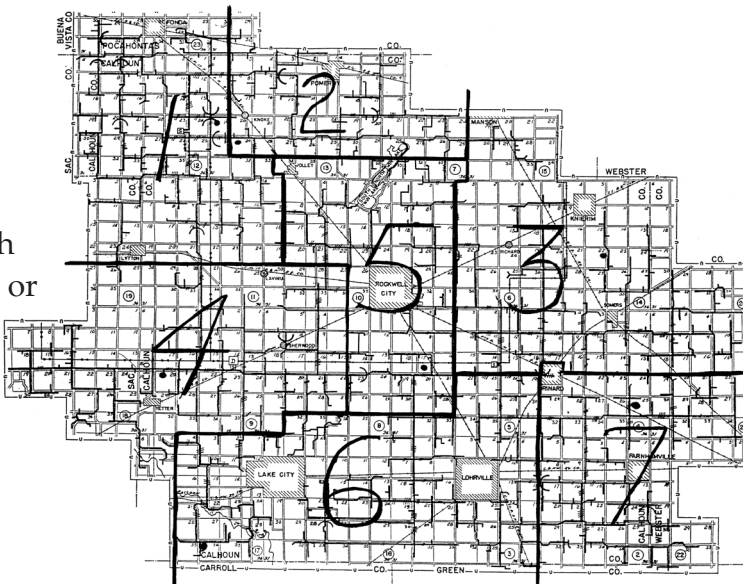
**Nominate a local volunteer  
and they could win  
\$1,500 for their charity!**

Contest entries accepted during June at  
[IowaShineTheLight.com](http://IowaShineTheLight.com)

## Two Positions on CCECA Board Open for Election



Two positions on Calhoun County Electric Cooperative's seven-member Board of Directors will be open for election at the September 1, 2021 annual meeting. This year the three year terms of Ron Hanson (District 2) and Duane Beschorner (District 7) will expire. Both directors are eligible to run for another 3-year term. If you are a member in either District 2 or 7 and are interested in serving on the Board of Directors, contact CEO Keaton Hildreth at 712-297-7112 or 800-821-4879.



## Memorial Day MAY 31

Calhoun County Electric Cooperative will be closed to observe Memorial Day and to remember those who served.

For outages and emergencies only, please call 712-297-7112 or 800-821-4879.



# Recipe of the Month

## Lemon Fruit Dip

- 1 - 3.4 oz box instant lemon pudding mix
  - 1 cup of cold milk
  - 2 - 6 oz containers of lemon yogurt
  - ½ of 8 oz tub whipped topping, thawed
  - Fruit and/or vanilla wafers for dipping
1. Whisk together the pudding mix and milk in a large bowl. Let sit for 1 minute to let it thicken a bit.
  2. Whisk in the yogurt.
  3. Fold in the whipped topping with a rubber spatula.
  4. Serve with cut up fruit and/or vanilla wafers.



**BUILT** by our community.  
**SHAPED** by our community.  
**LED** by our community.

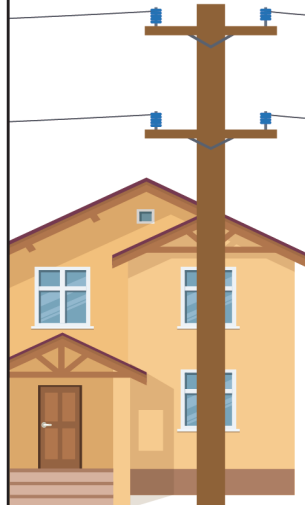
**WE'RE PROUD TO  
POWER YOUR LIFE.**



## Think Before You Climb

Before you rush into a job that requires you to use a ladder, take precautions before you climb.

### Electrical Safety



1. **Look up** and around for power line locations before using a ladder.
2. Keep a minimum **10-foot distance** from a power line or other electrical equipment at all times.
3. The minimum distance rule includes you (any part of your body) or **any object you are holding**, such as a ladder or tool.
4. Always **be aware of power line locations** when you are elevated.
5. Sources of elevation include, but are not limited to, a **ladder, rooftop, boom lift or scaffolding**.

### General Ladder Safety

1. Use a ladder on a **stable, level surface**.
2. Maintain **three-point contact** on the ladder when climbing.
3. Three points of contact mean **two hands and a foot** or **two feet and a hand**.
4. Keep your body **near the middle of the step** and face the ladder when climbing.
5. **Do not use the top step/rung** of a ladder unless designed for that purpose.
6. For a stepladder, make sure the base is **fully open** and the spreaders are **locked**.



Learn more about electrical safety:

 **Safe  
Electricity.org**

Sources:  
OSHA,  
American Ladder Institute

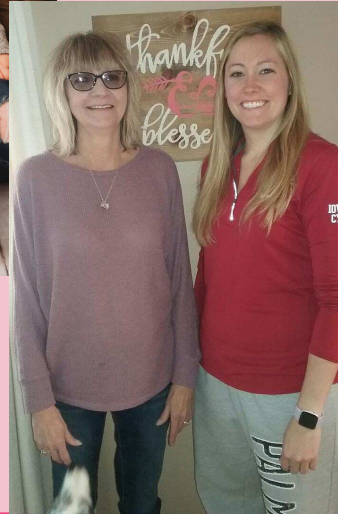
From our moms  
to you...

HAPPY  
Mother's  
Day



Kayla Wiederin,  
Communications  
Manager

Lori Morse,  
Billing Supervisor



## Reach Us

### OFFICE HOURS:

8 a.m. to 4:30 p.m.  
(Mon-Fri)

Contact 24/7 with the  
following numbers:

### General Phone:

(712) 297-7112

### Toll Free:

(800) 821-4879

### Fax:

(712) 297-7211

### Visit us online:

[www.calhounrec.coop](http://www.calhounrec.coop)

### Email:

[info@calhounrec.coop](mailto:info@calhounrec.coop)

### DIRECTORS:

Jim Miller, President - Fonda

LaVerne Arndt,

Vice President - Sac City

Jason McKenney,  
Secretary - Somers

Ron Hanson,  
Treasurer - Pomeroy

Duane Beschoner - Lohrville

Steve Boedecker - Rockwell City

Scott Hicks - Lake City

Keaton Hildreth, CEO

## Mark Your Calendar



2021 Annual Meeting:  
**September 1, 2021**

## Member Challenge...



1. How many positions are up for election on the CCECA's board? \_\_\_\_\_
2. The new Shine the Light contest is being launched in what month to celebrate local volunteers? \_\_\_\_\_
3. ☐ True or ☐ False: \$92,019 was returned to CCECA members during May as a bill credit.

Name \_\_\_\_\_

Find the answers within the stories, features, and content of this newsletter and you could win a prize. Send your answer to [kwiederin@calhounrec.coop](mailto:kwiederin@calhounrec.coop) or clip and mail to: Calhoun County Electric Cooperative, PO Box 312, Rockwell City, IA 50579. You may mail your entry along with your electric bill payment, but remember there is a deadline! Entries for this issue **must be received by June 1**. Three names will be drawn from all correct entries. Members will receive a \$10 credit on their account. Members who answer the questions correctly and participate at least three times throughout the year will be eligible for a \$100 bill credit, through a random drawing, at the end of the year.

*Congratulations to March's member challenge winners:  
Beverly Welander, Vincent Murphy & Lightner Farms, Inc.*



Know what's below.  
Call before you dig.

**IOWA ONE-CALL  
AT 811 OR  
(800) 292-8989  
BEFORE YOU DIG**

### EASY WAYS TO PAY BILL:

**Online:** Access through  
[www.calhounrec.coop](http://www.calhounrec.coop) and  
pay online 24/7.

**Auto Bill Pay (ACH):** Deduct  
from your bank account. Find  
the form on our website or  
stop by the office.

**Call:** Call the office and  
make a payment over the  
phone with a card or checking  
account.

**Outside Drop Box/  
Front Corner:**  
Rockwell City, IA

**U.S. Postal Mail**

This institution is an equal  
opportunity provider and employer.